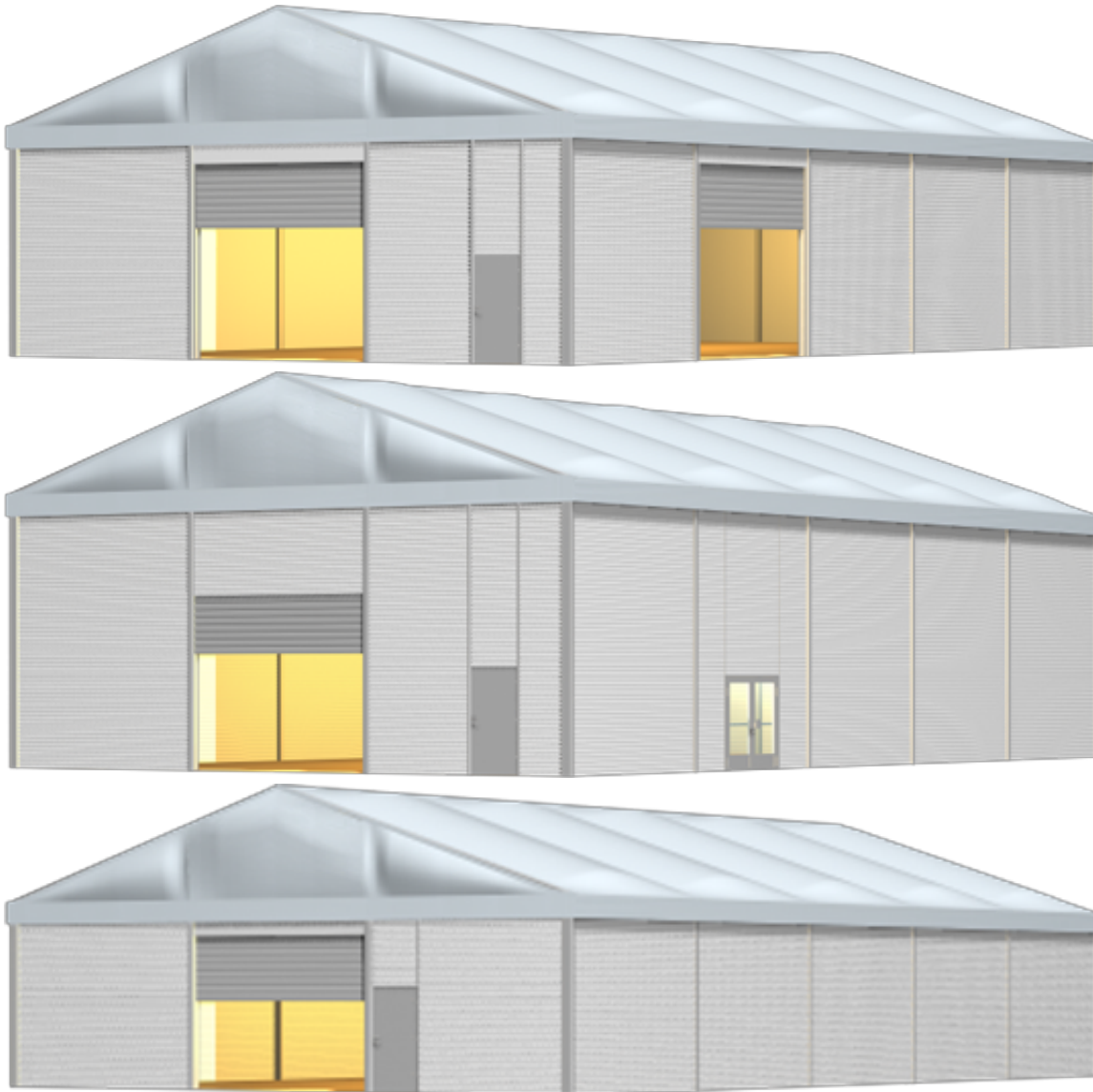


Tent image



Technical data

| | |
|--------------------------|----------------------------|
| Clear-span width | 1500 cm |
| Side height | 420 cm, 520cm, 620cm |
| Ridge height | 674 cm, 774cm, 874cm |
| Roof pitch | 18° |
| Bay distance | 500 cm |
| Gable uprights | 2 gable uprights (per end) |
| Longest component | 809 cm |

| | |
|---------------------------------------|---|
| Minimum tent length | 1500 cm |
| Maximum tent length | No limit |
| Main profile | 252 mm x 122 mm x 4 mm |
| Eave / corner connection | Internal eave insert |
| Max. allowed wind speed to DIN | 100 km/h |
| Wind Load | 0.5 kN/m ² |
| Snow load | 0.75 kN/m ² |
| Cover | RÖDER No. 1: PVC-coated polyester textile, flame retardant to DIN 4102 B1, M2, or inflated textile iso-roof |
| Special design | Portal beams can be used in place of cross struts |
| Trapezoidal metal sheets | Strip-galvanized, exterior color coating RAL 9002 (grey-white), protective paint coating inside iso-sandwich elements |

Tent top and side view image

