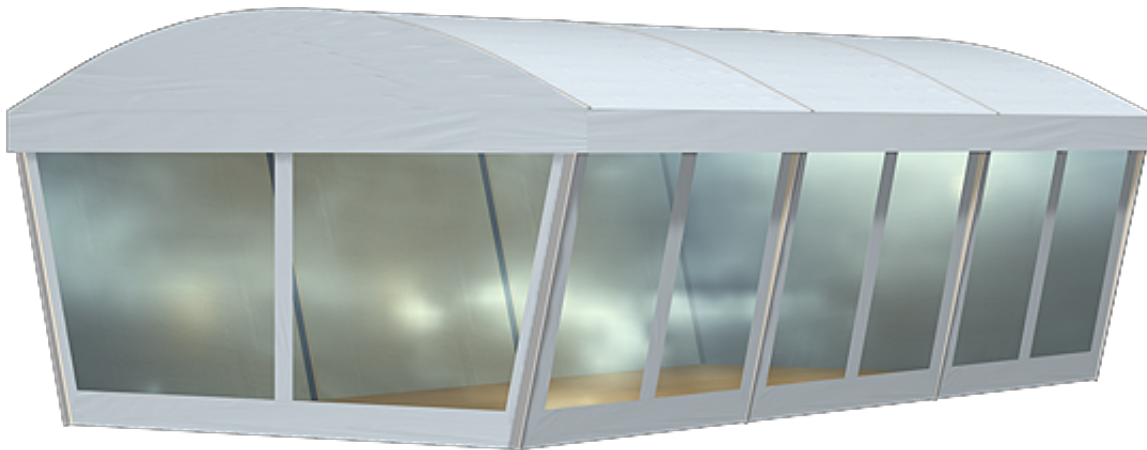


Tent image



Technical data

Clear-span width	400-500 cm
Side height	229 cm
Ridge height	306 cm
Roof pitch	25°
Bay distance	300 cm
Longest component	479 cm
Minimum tent length	600 cm
Maximum tent length	No limit
Main profile	81 mm x 48 mm x 3 mm (optional 94 mm x 48 mm x 3 mm)
Eave / corner connection	Internal eave insert
Max. allowed wind speed to DIN	80 km/h
Wind Load	0.3 kN/m ²
Flooring options	Woodenfloor with timber or steel sub-construction Aluminium cassettefloor with plywood or full aluminiumboards Compactfloor
Cover	RÖDER No. 1: PVC-coated polyester textile, flame retardant to DIN 4102 B1, M2
Special design	By using compactfloor or woodenfloor with steel sub-construction and weights anchoring can be omitted Portal beams can be used in place of cross struts

Tent top and side view image

